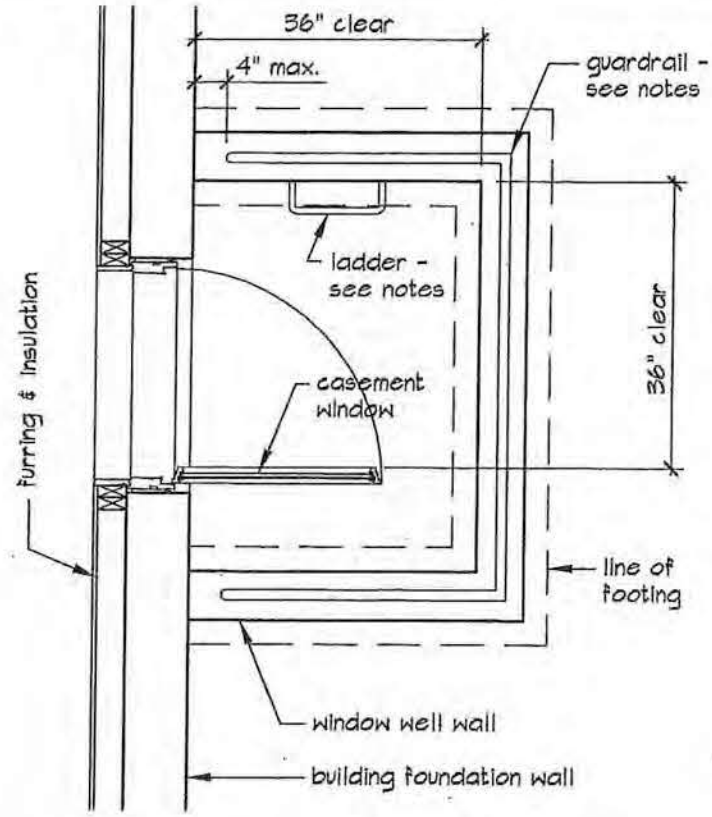


WINDOW WELL (CONCRETE) - CROSS SECTION
 scale: 1/2"=1'-0"



WINDOW WELL - FLOOR PLAN
 scale: 1/2"=1'-0"

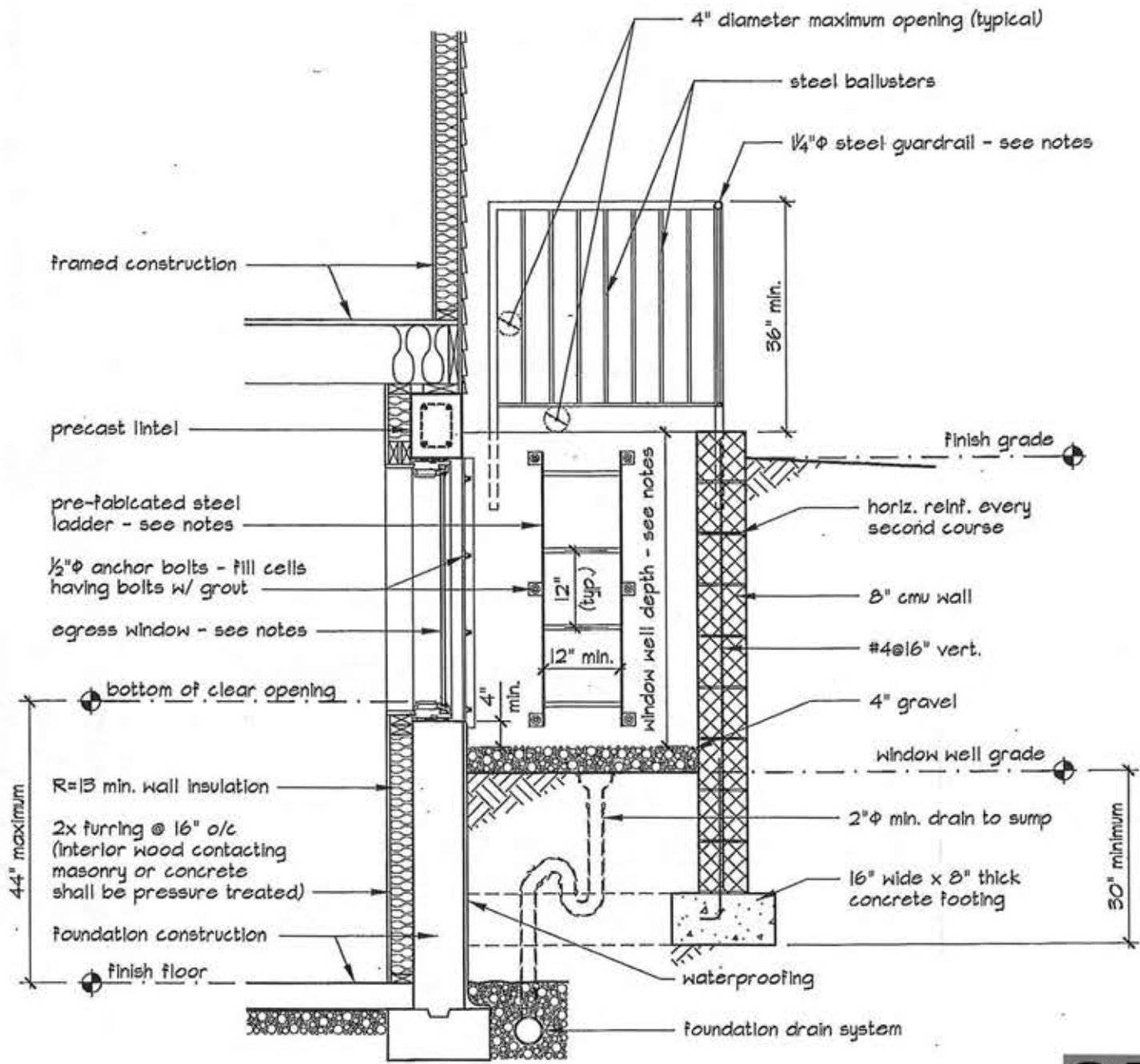
Notes:

- 1.) a guardrail is required when the window well depth is 30 inches or greater.
- 2.) a permanently affixed ladder is required when the window well depth is greater than 44 inches.
- 3.) the egress window (emergency escape and rescue opening) shall have a clear, unobstructed opening size of 5.7 square feet, minimum unobstructed opening width of 20 inches and minimum opening height of 24 inches. the net clear size(s) shall be obtained by normal operation of the window without special knowledge or tools.

WARNING AND DISCLAIMER

This drawing is intended only to be illustrative of the minimum requirements of applicable County ordinances. It is not a blue print, nor a set of plans and specifications. PRINCE GEORGE'S COUNTY, MARYLAND DOES NOT WARRANT OR GUARANTEE IN ANY MANNER OR TO ANY EXTENT THE SUFFICIENCY OF THIS DRAWING. Persons to whom this drawing is distributed should not rely on it as an acceptable plan or blue print for any structure. PRINCE GEORGE'S COUNTY, MARYLAND DISCLAIMS ANY AND ALL LIABILITY FOR DAMAGES OR INJURIES, DIRECT OR CONSEQUENTIAL, ARISING OUT OF THE USE OF THIS DRAWING.

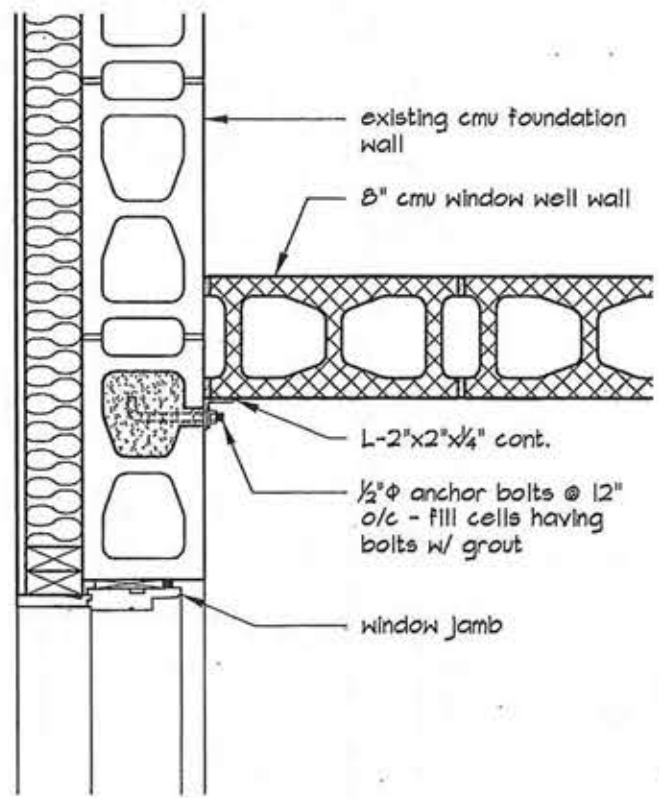
SAMPLE



WINDOW WELL (MASONRY) - CROSS SECTION
 scale: 1/2"=1'-0"

Notes:

- 1) a guardrail is required when the window well depth is 30 inches or greater.
- 2) a permanently affixed ladder is required when the window well depth is greater than 44 inches.
- 3) the egress window (emergency escape and rescue opening) shall have a clear, unobstructed opening size of 5.7 square feet, minimum opening width of 20 inches and minimum opening height of 24 inches. the net clear size(s) shall be obtained by normal operation of the window without special knowledge or tools.



CORNER DETAIL
 scale: 1"=1'-0"

WARNING AND DISCLAIMER

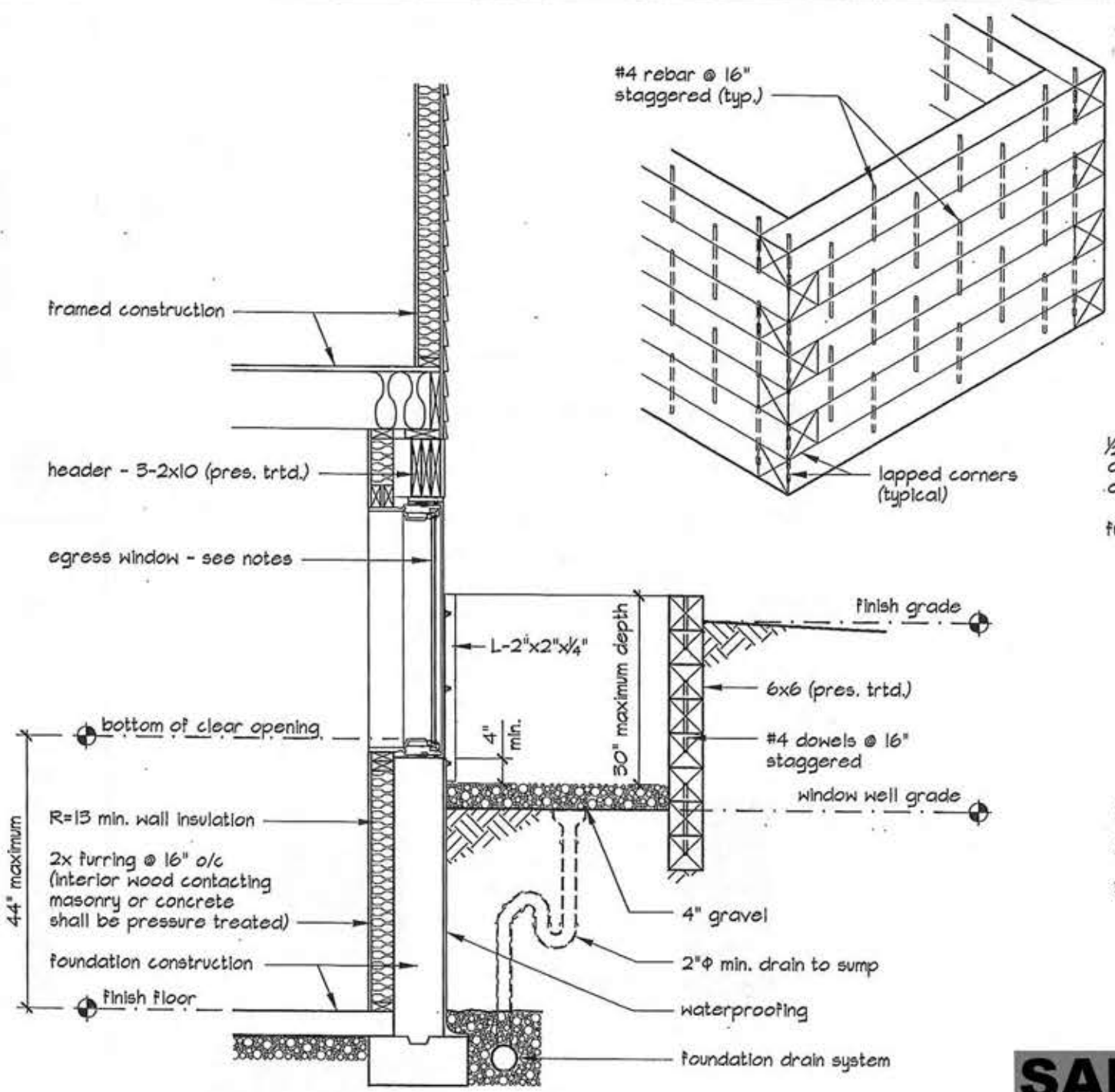
This drawing is intended only to be illustrative of the minimum requirements of applicable County ordinances. It is not a blue print, nor a set of plans and specifications. PRINCE GEORGE'S COUNTY, MARYLAND DOES NOT WARRANT OR GUARANTEE IN ANY MANNER OR TO ANY EXTENT THE SUFFICIENCY OF THIS DRAWING. Persons to whom this drawing is distributed should not rely on it as an acceptable plan or blue print for any structure. PRINCE GEORGE'S COUNTY, MARYLAND DISCLAIMS ANY AND ALL LIABILITY FOR DAMAGES OR INJURIES, DIRECT OR CONSEQUENTIAL, ARISING OUT OF THE USE OF THIS DRAWING.

SAMPLE

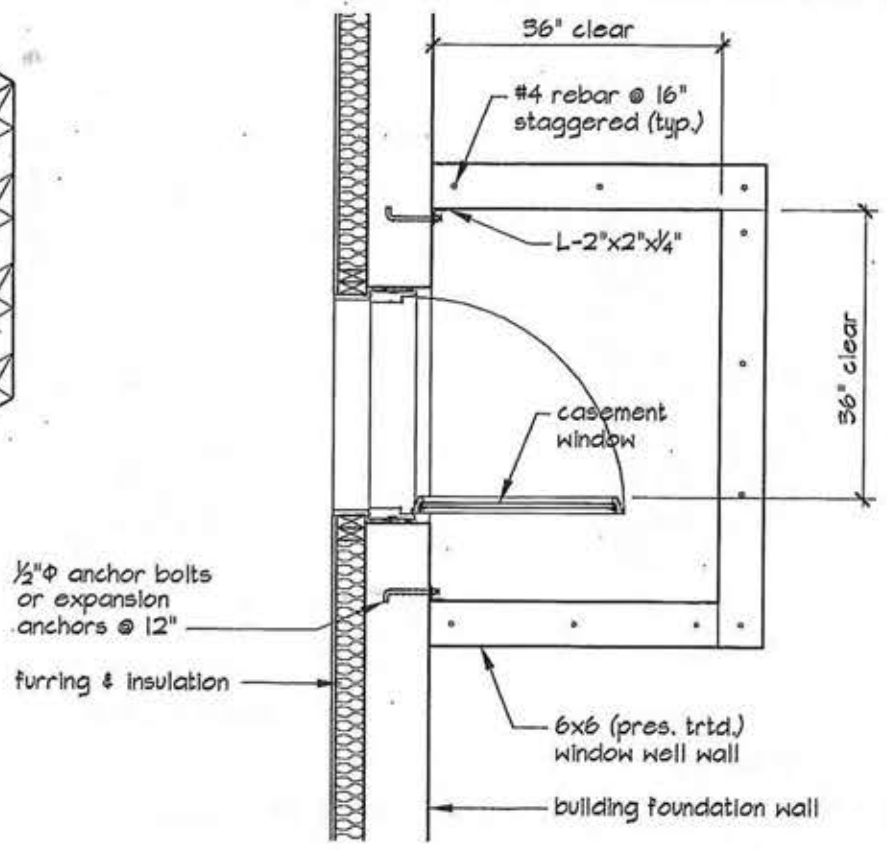
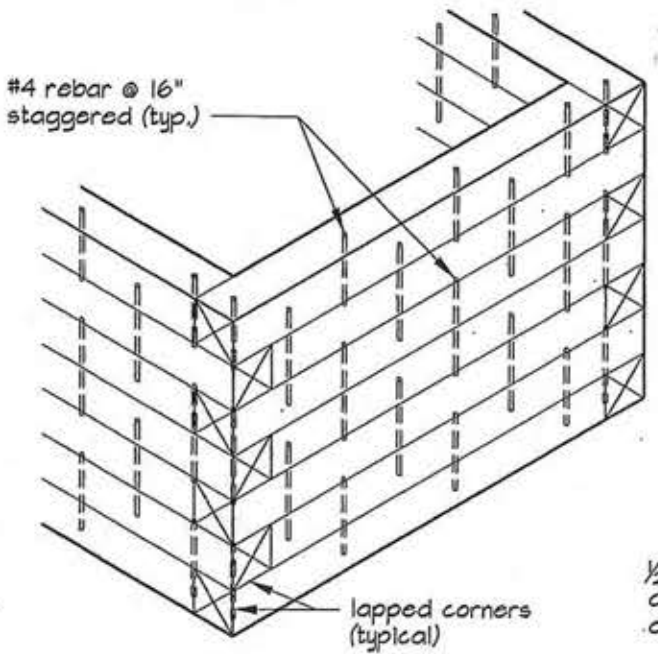
**MASONRY WINDOW WELL
 FLOOR PLAN &
 CROSS SECTION**

Drawing No.

D-017



WINDOW WELL (WOOD) - CROSS SECTION
 scale: 1/2"=1'-0"



WINDOW WELL (WOOD) - FLOOR PLAN
 scale: 1/2"=1'-0"

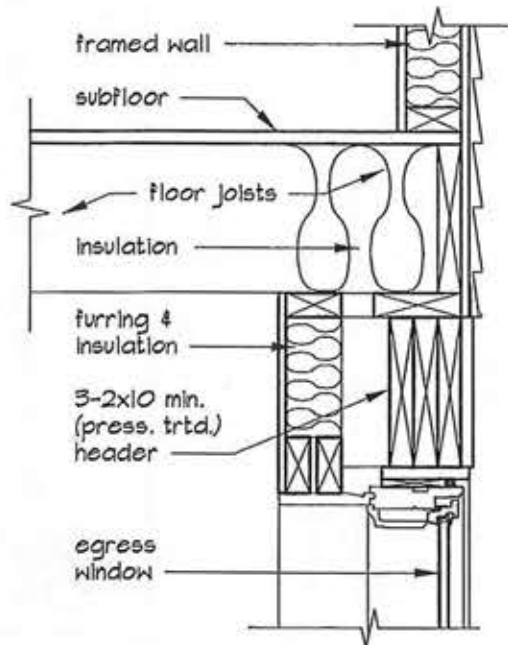
Notes:

- 1.) a guardrail is required when the window well depth is 30 inches or greater.
- 2.) a ladder is required when the window well depth is greater than 44 inches.
- 3.) the egress window (emergency escape and rescue opening) shall have a clear, unobstructed opening size of 5.7 square feet, minimum opening width of 20 inches and minimum opening height of 24 inches. the net clear size(s) shall be obtained by normal operation of the window without special knowledge or tools.

SAMPLE

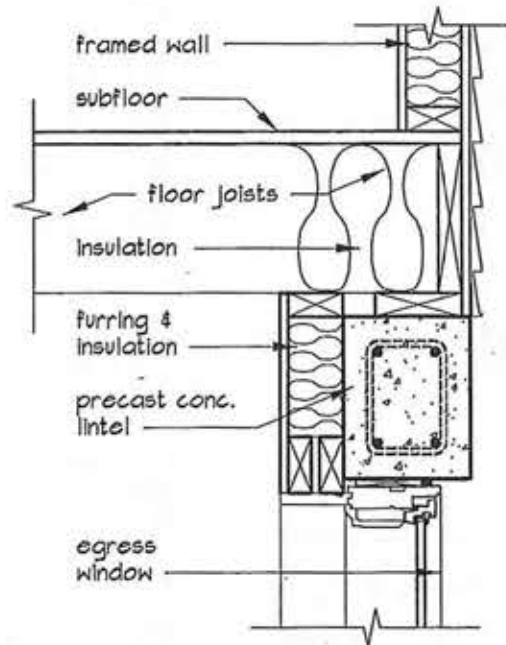
WARNING AND DISCLAIMER

This drawing is intended only to be illustrative of the minimum requirements of applicable County ordinances. It is not a blue print, nor a set of plans and specifications. PRINCE GEORGE'S COUNTY, MARYLAND DOES NOT WARRANT OR GUARANTEE IN ANY MANNER OR TO ANY EXTENT THE SUFFICIENCY OF THIS DRAWING. Persons to whom this drawing is distributed should not rely on it as an acceptable plan or blue print for any structure. PRINCE GEORGE'S COUNTY, MARYLAND DISCLAIMS ANY AND ALL LIABILITY FOR DAMAGES OR INJURIES, DIRECT OR CONSEQUENTIAL, ARISING OUT OF THE USE OF THIS DRAWING.



40" max, rough opening; 4" min. bearing ea. side

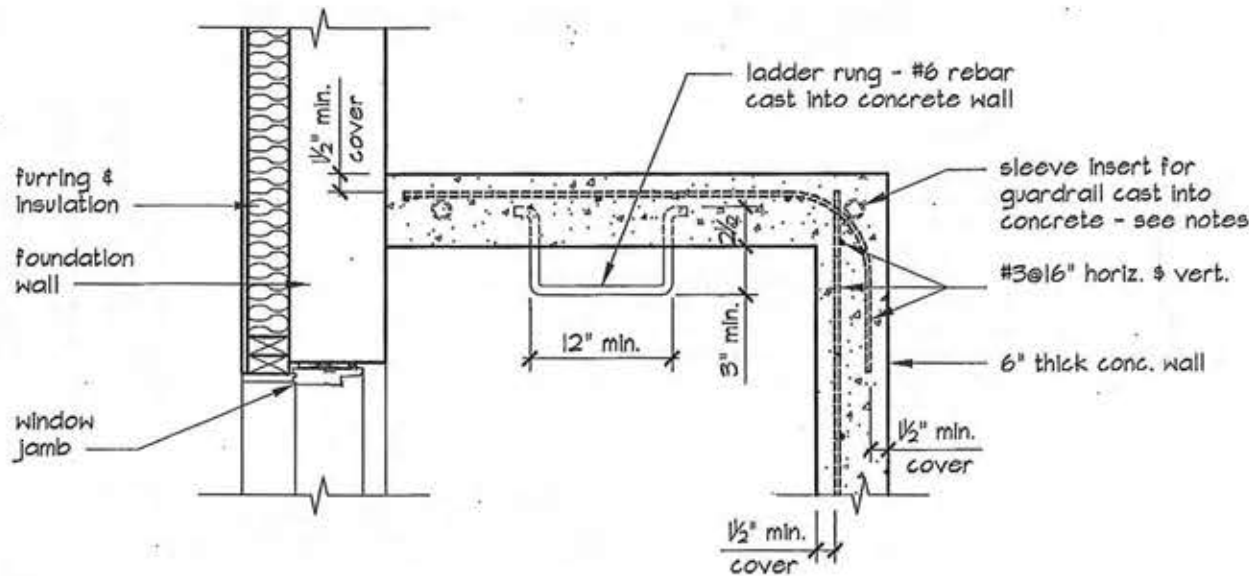
WOOD HEADER



PRECAST LINTEL

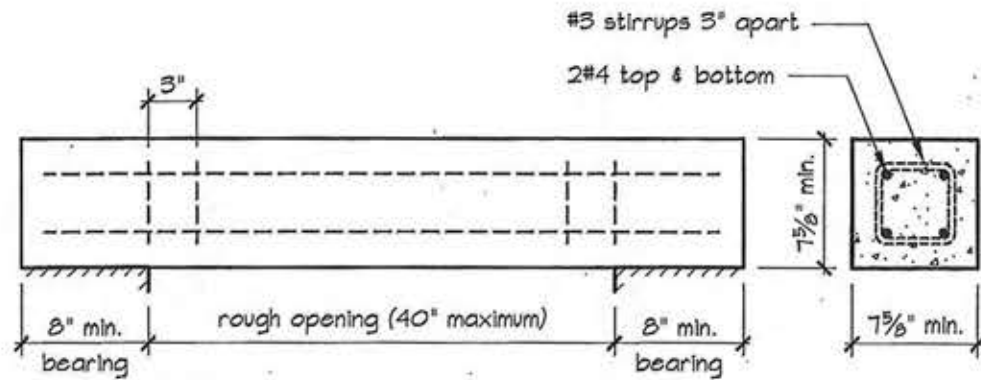
WINDOW LINTEL/HEADER OPTIONS DETAILS

scale: 1"=1'-0"



CONCRETE WINDOW WELL PLAN DETAIL

scale: 3/4"=1'-0"

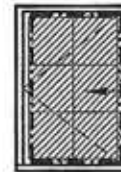


concrete f'c=3000 psi minimum; reinforcing steel fy= 60,000 psi

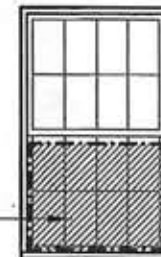
PRECAST CONCRETE LINTEL DETAILS

Notes:

- 1.) a guardrail is required when the window well depth is 30 inches or greater.
- 2.) a ladder is required when the window well depth is greater than 44 inches.
- 3.) the egress window (emergency escape and rescue opening) shall have a clear, unobstructed opening size of 5.7 square feet, minimum opening width of 20 inches and minimum opening height of 24 inches. the net clear size(s) shall be obtained by normal operation of the window without special knowledge or tools.



CASEMENT



DOUBLE HUNG

clear unobstructed opening area 5.7 s.f. minimum

WINDOW TYPES

SAMPLE

WARNING AND DISCLAIMER

This drawing is intended only to be illustrative of the minimum requirements of applicable County ordinances. It is not a blue print, nor a set of plans and specifications. PRINCE GEORGE'S COUNTY, MARYLAND DOES NOT WARRANT OR GUARANTEE IN ANY MANNER OR TO ANY EXTENT THE SUFFICIENCY OF THIS DRAWING. Persons to whom this drawing is distributed should not rely on it as an acceptable plan or blue print for any structure. PRINCE GEORGE'S COUNTY, MARYLAND DISCLAIMS ANY AND ALL LIABILITY FOR DAMAGES OR INJURIES, DIRECT OR CONSEQUENTIAL, ARISING OUT OF THE USE OF THIS DRAWING.



Prince George's County Government
Dept. of Permitting, Inspections and Enforcement



WINDOW WELL DETAILS

Drawing No.

D-019

Sheet 4 of 4