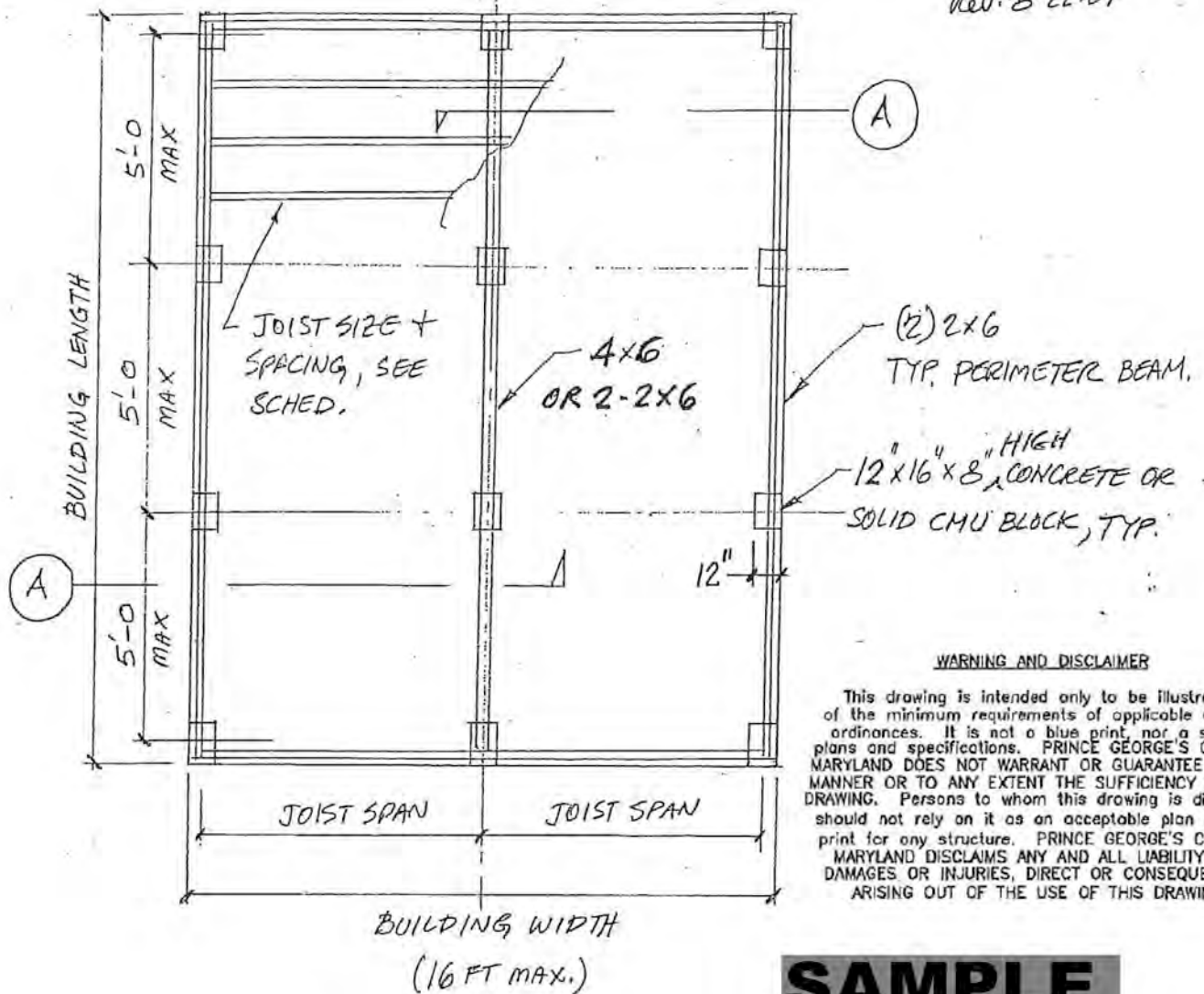


Storage Shed

1 OF 4

STORAGE SHED.

JUL 7-30-04
REV. 8-22-07



WARNING AND DISCLAIMER

This drawing is intended only to be illustrative of the minimum requirements of applicable County ordinances. It is not a blue print, nor a set of plans and specifications. PRINCE GEORGE'S COUNTY, MARYLAND DOES NOT WARRANT OR GUARANTEE IN ANY MANNER OR TO ANY EXTENT THE SUFFICIENCY OF THIS DRAWING. Persons to whom this drawing is distributed should not rely on it as an acceptable plan or blue print for any structure. PRINCE GEORGE'S COUNTY, MARYLAND DISCLAIMS ANY AND ALL LIABILITY FOR DAMAGES OR INJURIES, DIRECT OR CONSEQUENTIAL, ARISING OUT OF THE USE OF THIS DRAWING.

SAMPLE

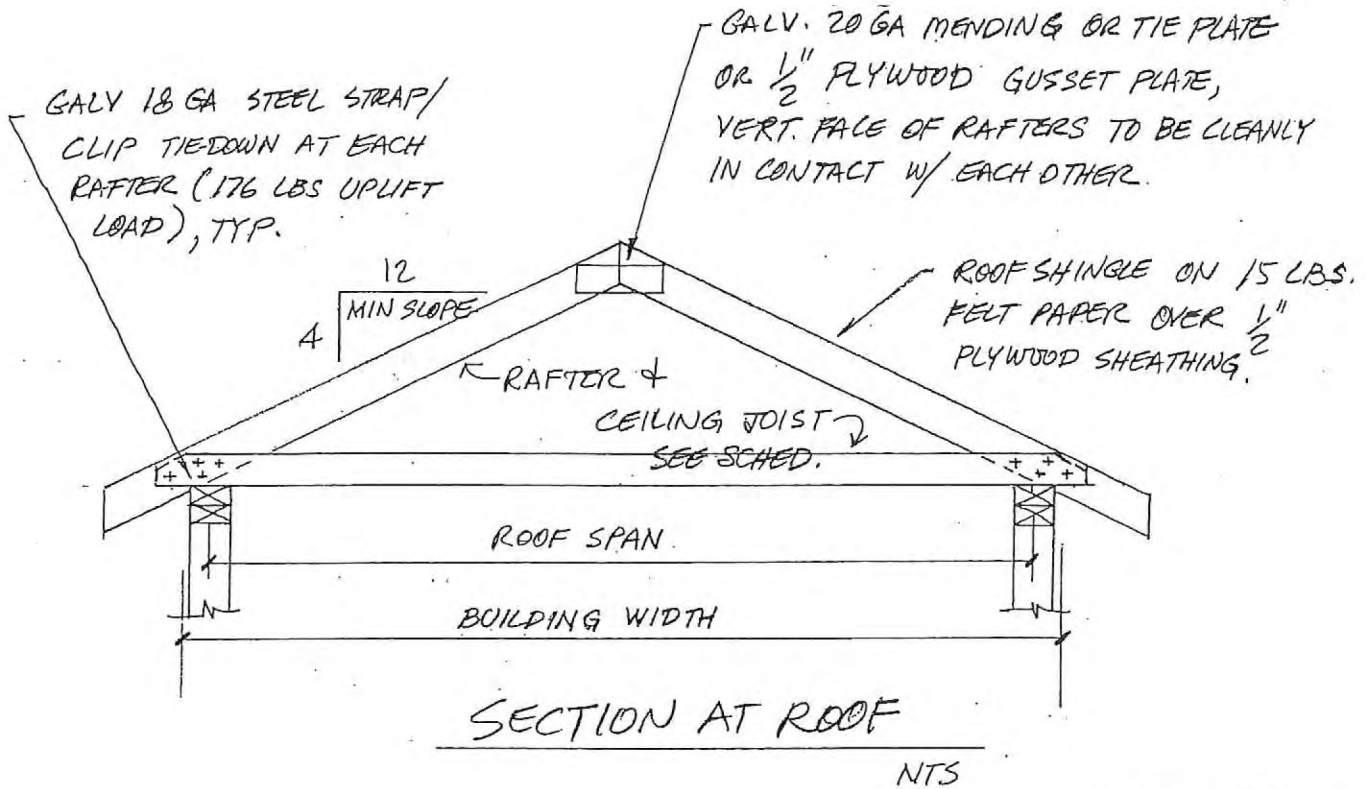
FRAMING PLAN

NTS.

NOTES:

1. FOR BUILDING WIDTH OF 8 FT OR LESS CENTER BEAM SUPPORT MAY BE DELETED AND JOISTS SHALL SPAN FROM EXT. WALL TO EXT. WALL.
2. PERIMETER BEAMS, BEAMS + JOISTS SHALL BE PRESSURE TREATED, JOISTS ATTACHED TO PERIMETER BEAM WITH GALV. JOIST HANGERS.

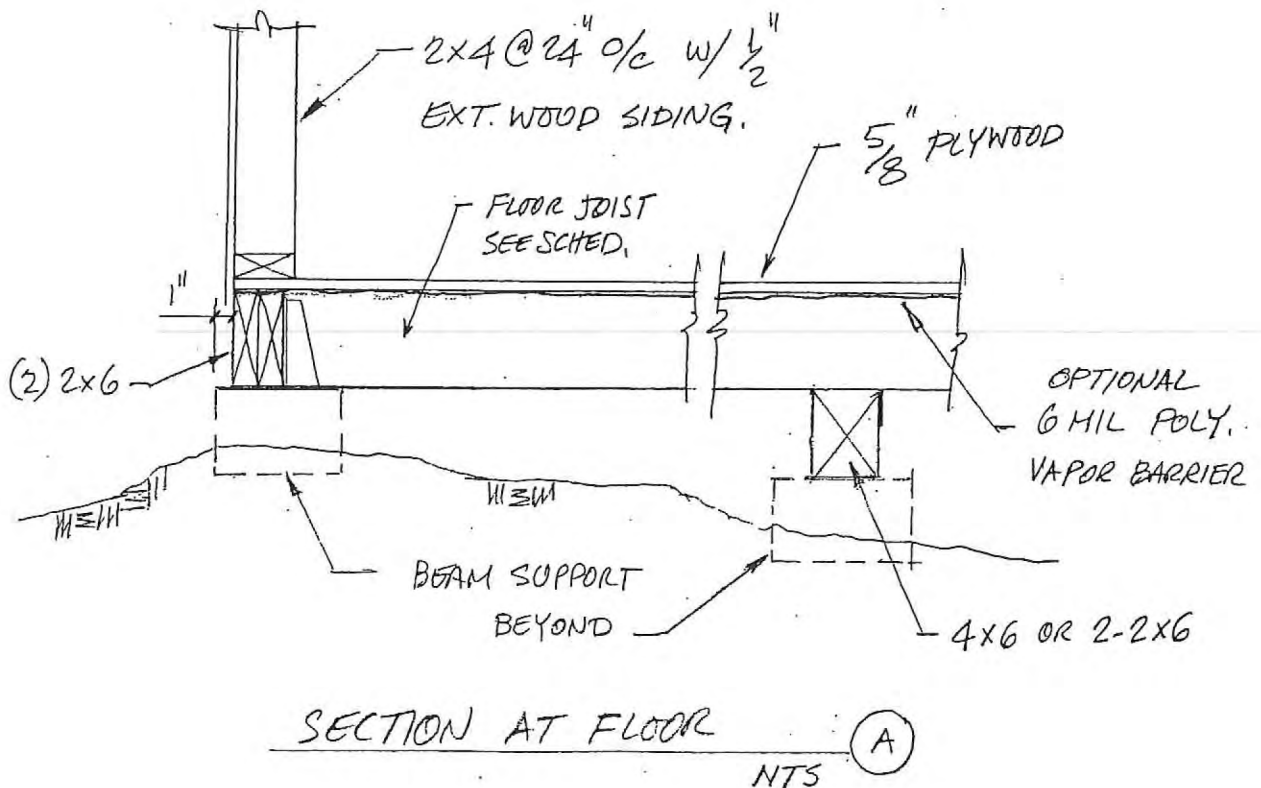
ALL DIMENSIONAL LUMBERS SHALL BE NO. 2 GRADE SPF, OR NO. 2 SOUTHERN YELLOW PINE.
3. PROVIDE OVERLAPPING OF TOP PLATES AT CORNER, END JOINT IN THE PLATES TO BE OFFSET AT LEAST 24 INCHES



SAMPLE

WARNING AND DISCLAIMER

This drawing is intended only to be illustrative of the minimum requirements of applicable County ordinances. It is not a blue print, nor a set of plans and specifications. PRINCE GEORGE'S COUNTY, MARYLAND DOES NOT WARRANT OR GUARANTEE IN ANY MANNER OR TO ANY EXTENT THE SUFFICIENCY OF THIS DRAWING. Persons to whom this drawing is distributed should not rely on it as an acceptable plan or blue print for any structure. PRINCE GEORGE'S COUNTY, MARYLAND DISCLAIMS ANY AND ALL LIABILITY FOR DAMAGES OR INJURIES, DIRECT OR CONSEQUENTIAL, ARISING OUT OF THE USE OF THIS DRAWING.



FLOOR JOIST SCHEDULE	
SIZE & SPACING (INCH)	MAX SPAN (FT-IN)
2x4 @ 12	6'-9"
2x4 @ 16	6'-2"
2x6 @ 16	9'-9"

RAFTER & CEILING JOIST SCHEDULE			
RAFTER	CEILING JOIST	SPACING (IN)	MAX ROOF SPAN
2x4	2x4	24	10'-0"
2x4	2x6	24	14'-0"
2x6	2x6	24	16'-0"

HEADER SCHEDULE	
HEADERS	MAX SPAN
2-2x4	3'-3"
2-2x6	4'-10"
2-2x8	6'-2"
2-2x10	7'-6"
2-2x12	8'-8"

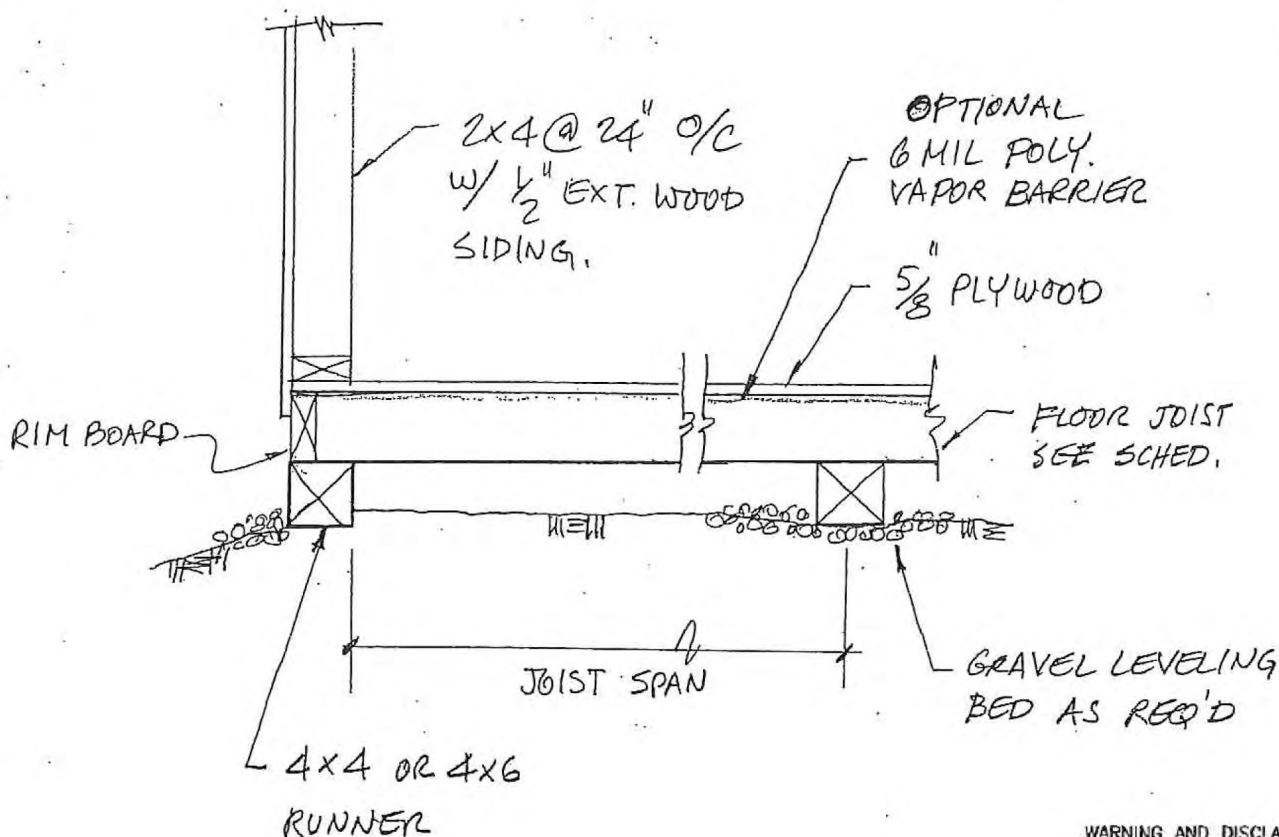
WARNING AND DISCLAIMER

This drawing is intended only to be illustrative of the minimum requirements of applicable County ordinances. It is not a blue print, nor a set of plans and specifications. PRINCE GEORGE'S COUNTY, MARYLAND DOES NOT WARRANT OR GUARANTEE IN ANY MANNER OR TO ANY EXTENT THE SUFFICIENCY OF THIS DRAWING. Persons to whom this drawing is distributed should not rely on it as an acceptable plan or blue print for any structure. PRINCE GEORGE'S COUNTY, MARYLAND DISCLAIMS ANY AND ALL LIABILITY FOR DAMAGES OR INJURIES, DIRECT OR CONSEQUENTIAL, ARISING OUT OF THE USE OF THIS DRAWING.

FLOOR
 DL 10 PSF
 LL 40 PSF
 ΔL 1/360

ROOF
 DL 10 PSF
 LL 30 PSF
 ΔL 1/240

SAMPLE



WARNING AND DISCLAIMER

This drawing is intended only to be illustrative of the minimum requirements of applicable County ordinances. It is not a blue print, nor a set of plans and specifications. PRINCE GEORGE'S COUNTY, MARYLAND DOES NOT WARRANT OR GUARANTEE IN ANY MANNER OR TO ANY EXTENT THE SUFFICIENCY OF THIS DRAWING. Persons to whom this drawing is distributed should not rely on it as an acceptable plan or blue print for any structure. PRINCE GEORGE'S COUNTY, MARYLAND DISCLAIMS ANY AND ALL LIABILITY FOR DAMAGES OR INJURIES, DIRECT OR CONSEQUENTIAL, ARISING OUT OF THE USE OF THIS DRAWING.

SECTION AT FLOOR

NTS

(ALTERNATE FLOOR FRAMING)

A1

NOTES (CONT.)

4. PRESSURE TREATED RUNNERS MAY BE USED IN LIEU OF BEAMS, SEE SECTION ABOVE, SELECT SIZE & SPACING OF FLOOR JOIST AND NUMBER OF INTERIOR RUNNERS PER JOIST SCHEDULE, INTERIOR RUNNERS SHALL BE SET AT EQUAL SPACING BETWEEN WALLS
5. USE DOUBLE FLOOR JOISTS AT BOTH END OF WALLS